

---

1、 Loosen below shown screws.



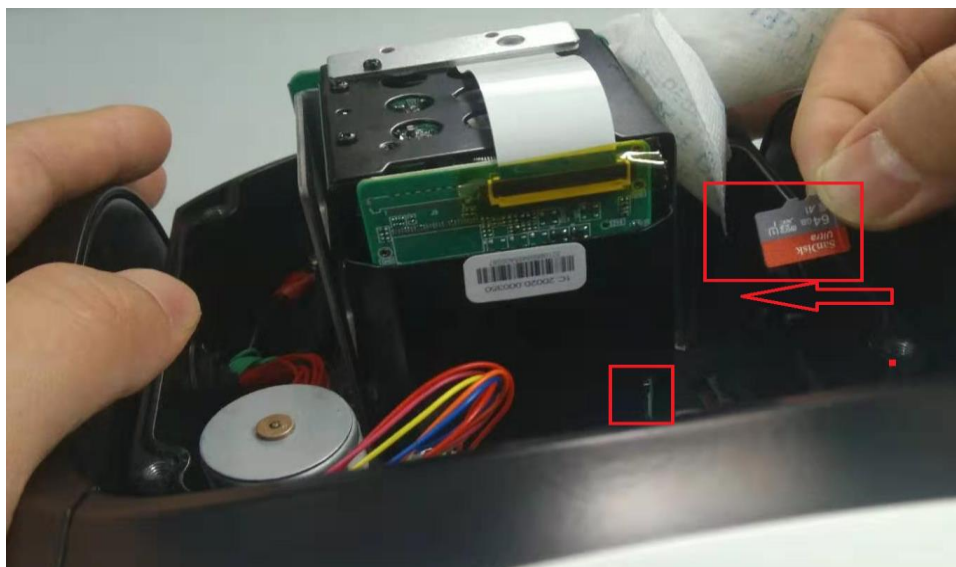
2、 Get this picture.



3、 Take out the Fan.



4、 You will see the card slot. Add the SD card in the shown direction. Maybe you need a tweezers.



Be careful here, do not install it in the wrong location. Put it inside the slot, you will hear a small sound and then the SD card will be locked;



The SD card slot is like the picture below, do not insert it wrong beside.

